



CORPORATE CITIZENSHIP
SUMMARY

GREATER TECHNOLOGY GREATER GOOD

MESSAGE FROM OUR PRESIDENT AND CEO



2019 marks AMD's 50th anniversary. Our commitment to pushing the boundaries of what is possible in high performance computing has never been stronger. AMD's innovative computing and graphics products are helping the best and the brightest tackle the world's toughest challenges. From medical advances and scientific breakthroughs to solutions for more efficient use of our natural resources, our products are transforming lives and our planet for the better.

At AMD, we strive to make a positive impact on our industry and our world. From Fortune 500 businesses to cutting-edge scientific research institutions to everyday consumers – users rely on AMD technology to make what was impossible, possible. We're not slowing down. There is always the next challenge to solve.

We are extremely proud of our history and are equally excited about what we will accomplish over the next 50 years for our communities and our planet.

A handwritten signature in black ink, reading "Lisa Su".

Dr. Lisa Su
President and CEO

AMD | **50**
CELEBRATING 50 YEARS *of* INNOVATION

WHO WE ARE

Since our founding in 1969, AMD has driven innovation in high-performance computing, graphics and visualization technologies – the building blocks for gaming, immersive platforms and the datacenter. Hundreds of millions of consumers, leading Fortune 500 businesses and cutting-edge scientific research facilities rely on AMD technology daily to improve how they live, work and play. AMD employees around the world are focused on building great products that push the boundaries of what is possible.

AMD
EPYC

AMD
RADEON

AMD
RYZEN

Learn more at [AMD.com](https://www.amd.com)

WHAT WE MAKE

GRAPHICS

AMD combines breakthrough graphics architecture with cutting-edge software to build platforms that can handle the most challenging, important and graphics-intensive applications today – including gaming, creation, compute, AI, and virtual and augmented reality.



Gaming



Compute & AI



Virtual &
Augmented Reality

COMPUTE

AMD's high-performance microprocessors and chipsets deliver powerful, efficient performance for consumer and commercial devices like desktops, laptops and servers.



Client Systems



Infrastructure & Cloud

SOLUTIONS

AMD's leading high-performance graphics and compute design capabilities uniquely enable us to create differentiated solutions for customers and partners. From embedded products that power medical imaging devices and digital signage to semi-custom processors for leading game consoles and beyond, AMD technology is everywhere.



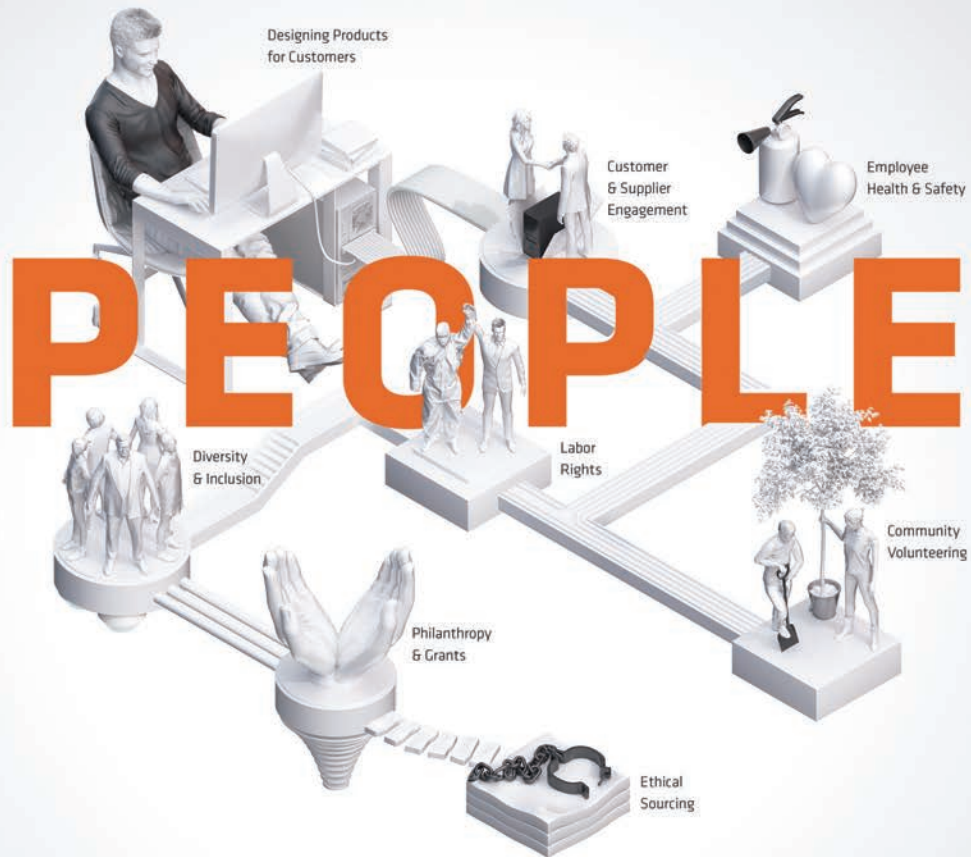
Semi-Custom



Vertical Platforms



Partnerships



THE POWER BEHIND INNOVATION

We strive to ensure that working conditions throughout our supply chain are safe, and that everyone involved in delivering AMD products – from the design lab to the manufacturing line – is treated with dignity and respect.

We nurture an inclusive work environment where employees bring their unique perspectives and passions to work every day.



OUR COMMITMENT TO THE FUTURE

We are committed to operations that reduce greenhouse gas emissions and electricity use. We focus on developing energy-efficient processors, and our 2020 climate goals are verified by the Science Based Targets Initiative.

We contribute to our local communities through the time and talent of our workforce in company-sponsored volunteer events.

Learn more at [AMD.com/CorporateResponsibility](https://www.amd.com/CorporateResponsibility)



TECHNOLOGY ENABLING A BETTER WORLD

We believe that immersive and instinctive computing will transform our lives, and we are inspired by how digital technology has improved our world. From helping students learn to creating innovative new therapies for veterans to mapping the universe we live in – AMD technology is opening new doors to a better world.

CORE ISSUES

MAPPING OUR CORE ISSUES
TO THE SUSTAINABLE
DEVELOPMENT GOALS



9 | INDUSTRY, INNOVATION
& INFRASTRUCTURE



13 | CLIMATE ACTION



4 | QUALITY EDUCATION



8 | DECENT WORK &
ECONOMIC GROWTH



11 | SUSTAINABLE CITIES
& COMMUNITIES



3 | GOOD HEALTH
& WELL-BEING



In 2018, AMD made strong progress in four strategic focus areas, while continuing to advance a broader scope of initiatives. We participated in the first quantitative performance analysis against the U.N. Sustainable Development Goals – showing how advancing our core issues helps to address global challenges.

DATA PRIVACY & SECURITY

At AMD, security is a top priority and we are continually working to improve the safety of our users as new risks arise. Some AMD processors have security features included in the hardware, such as Secure Encrypted Virtualization (SEV).

ROLE OF TECHNOLOGY IN SOCIETY

AMD technology advances education, healthcare, scientific research and more. In 2018, we launched ten new product families in emerging fields like machine learning, artificial intelligence and augmented/virtual reality.

ENERGY EFFICIENCY & CLIMATE CHANGE

AMD's 2020 climate goals span supply chain, operations and product use, and are approved by the Science Based Targets initiative. In 2018, we designed the most energy-efficient AMD mobile Accelerated Processing Unit (APU) to date, sourced 27 million kwh of renewable energy, and sustained supply chain energy and emissions well below industry averages.

HUMAN RIGHTS & LABOR ISSUES

We expanded supplier responsibility initiatives to reach 100% of direct suppliers, maintained our 100% Corporate Equality Index score from the Human Rights Campaign, and are proud to be full members of the Responsible Business Alliance.

Learn more at [AMD.com/CoreIssues](https://www.amd.com/coreissues)

NEXT HORIZON

THE DATACENTER HOLDS
ENORMOUS POTENTIAL
TO IMPROVE OUR WORLD

THE WORKLOADS OF THE FUTURE REQUIRE INCREDIBLE AMOUNTS OF COMPUTE POWER



HIGH-PERFORMANCE
COMPUTING

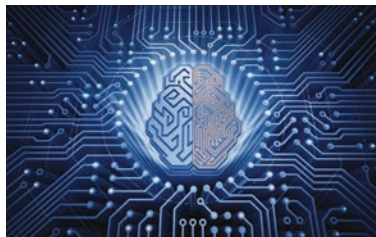


CLOUD, HYPERSCALE
& VIRTUALIZATION

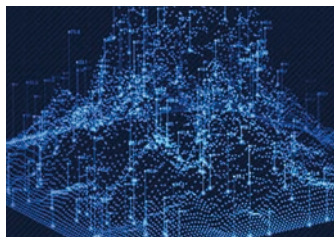


MACHINE
INTELLIGENCE

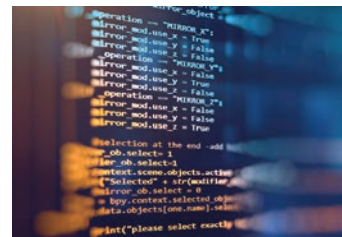
AMD WILL PUT THAT POWER IN THE HANDS OF PEOPLE EVERYWHERE



IMMERSIVE & INSTINCTIVE
COMPUTING



BIG DATA
ANALYTICS



SOFTWARE-DEFINED
STORAGE

Learn more at [AMD.com/EpycServer](https://www.amd.com/en/server)

TECHNOLOGY ENABLING A BETTER WORLD



NEW HPE+AMD SERVER SOLUTION ENABLES FAST, ACCURATE DATA EXPLORATION

Dedicated to advancing scientific discovery, the University of Notre Dame Center for Research Computing (CRC) enables multidisciplinary research through advanced computation, data analysis and other digital tools. When the CRC decided to add a new high-performance computing (HPC) cluster, one of the partners they turned to was AMD – a provider of technologies used to help solve some of the world's toughest challenges.



zSPACE TAKES LEARNING INTO NEW DIMENSIONS WITH AMD

zSpace equips today's classrooms to be more adaptable, engaging and individualized for students through sophisticated, immersive learning technologies. Their instructional tools enable features like 3D visualization and modeling, haptic and touch feedback, as well as virtual reality (VR) and augmented reality (AR). More than 1,000 school districts, technical centers, medical schools and universities around the globe use zSpace.



ENABLING PRECISION WHERE IT'S NEEDED MOST

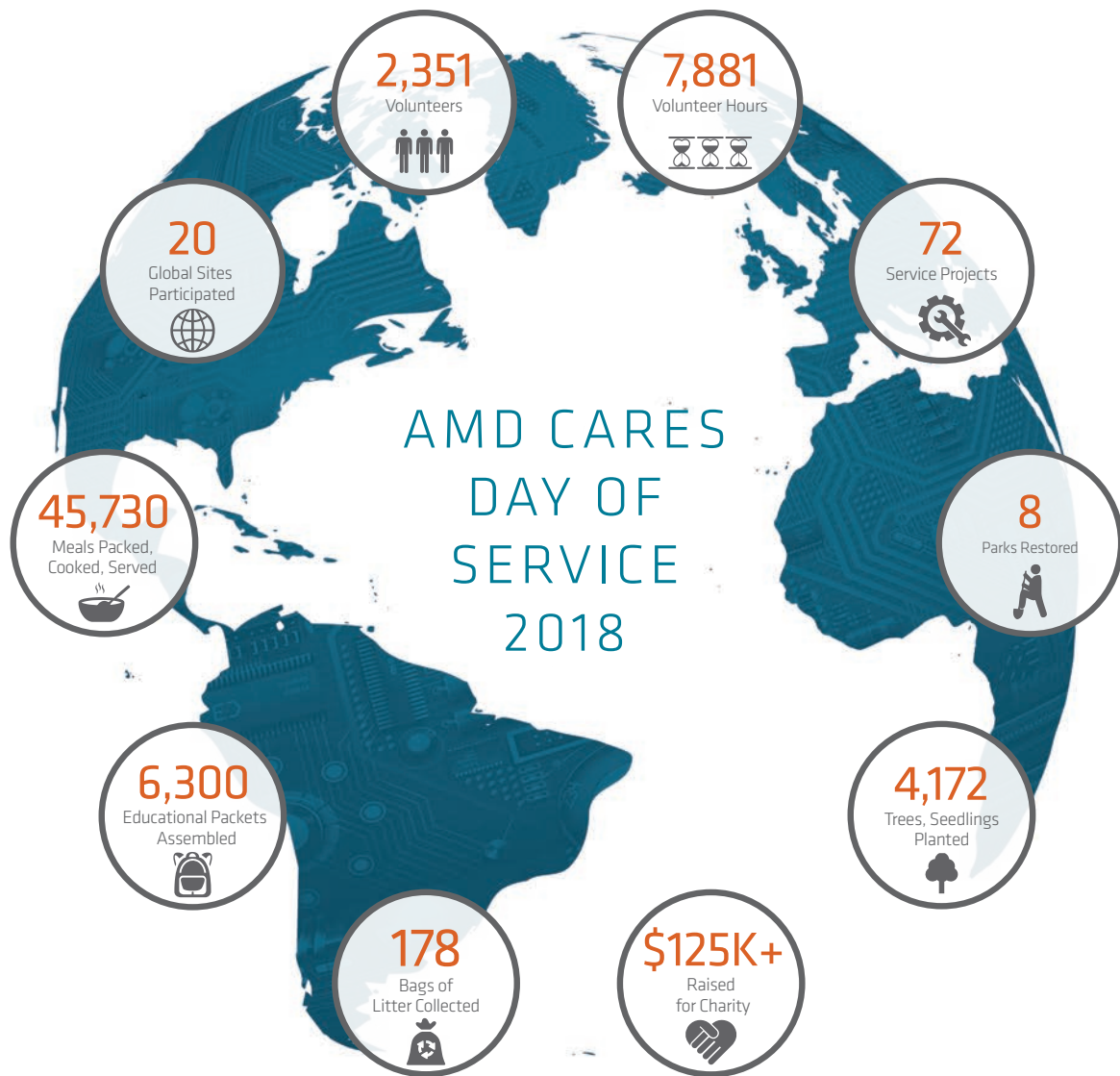
Diagnostic displays play an essential role in radiological practices. To help doctors provide the best possible care to patients, Barco utilized AMD's industry-leading graphics solutions when designing their powerful new display systems. Enabling acute improvements in day-to-day medical operations, these systems revolutionize diagnostic imaging and the assessment of patient information – enhancing workflow and quality of care.



COMMUNITY AFFAIRS

For more than 35 years, AMD has invested time, money, and technology in organizations that help strengthen communities worldwide. Our employees also continue to make their communities a better place through volunteerism and donations to local organizations. Since 1995, AMD has contributed \$18.2 million USD to charitable causes and our workforce has performed more than 210,000 hours of volunteer service.

Learn more at [AMD.com/Community](https://www.amd.com/Community)



AMD CARES DAY OF SERVICE 2018

STRENGTHENING OUR COMMUNITIES WORLDWIDE

AMD has always believed that workplace volunteering strengthens our communities, our employees and our company. Every year we amplify this belief through our annual AMD Cares Day of Service – encouraging our global workforce to volunteer in social and environmental projects, reinforcing our longstanding commitment to our communities.

RESPONSIBILITY ON A GLOBAL SCALE



SANTA CLARA

Established: 2017
Original HQ in Sunnyvale, 1969
Operations: AMD Corporate
Headquarters, R&D, Design



AUSTIN

Established: 1978
Operations: Corporate,
R&D, Design



MARKHAM

Established: 1985
Acquired by AMD in 2006
Operations: AMD Canadian
Headquarters and
Graphics R&D Center

- R&D, Design
- Sales, Business Services
- Corporate Offices

AMD REGIONS

Americas

1

EMEA

2

Asia Pacific

3

Greater China

4

India

5

1

- Atlanta, GA
- Austin, TX
- Bellevue, WA
- Boxborough, MA
- Buenos Aires, Argentina
- Calgary, Alberta
- Fort Collins, CO
- Houston, TX

- Maple Grove, MN
- Markham, Ontario
- Mexico City, Mexico
- Orlando, FL
- San Diego, CA
- Santa Clara, CA
- São Paulo, Brazil

2

- Brussels, Belgium
- Dubai, United Arab Emirates
- Grenoble, France
- Istanbul, Turkey
- Milan, Italy
- Milton Keynes, United Kingdom
- Moscow, Russia
- Munich, Germany

HYDERABAD

Established: 2008

Operations: R&D, Design,
Focusing on Graphics and
Computing Solutions



MALAYSIA

Penang Established: 1972

Operations: Assembly,
Test, Mark and Pack Facility

Cyberjaya Established: 2008

Operations: Sales, Business Services



BENGALURU

Established: 2004

Operations: R&D, Design
Focusing on Graphics and
Computing Solutions



SINGAPORE

Established: 1984

Operations: Singapore Product
Development Center (SPDC)
and APJ Sales & Marketing



BEIJING

Established: 2004

Operations: Greater
China Headquarters,
Sales, R&D, Design



SHANGHAI

Established: 2006

Operations: Shanghai
Research and Development
Center (SRDC); AMD's
Largest System Design Hub
Outside of the United States



TAIPEI

Established: 1987

Operations: R&D, Design



3

- Bangkok, Thailand
- Cyberjaya, Malaysia
- Jakarta, Indonesia
- Melbourne, Australia
- Penang, Malaysia
- Seoul, South Korea
- Singapore
- Sydney, Australia

4

- Beijing, China
- Chongqing, China
- Hong Kong, China
- Hsinchu, Taiwan, China
- Shanghai, China
- Shenzhen, China
- Suzhou, China
- Taipei, Taiwan, China

5

- Bengaluru, India
- Gurgaon, India
- Hyderabad, India
- Mumbai, India



ENVIRONMENTAL SUSTAINABILITY

We are focused on environmental excellence across our operations, supply chain and product design.

Our 2020 climate goals are verified by the Science Based Targets initiative.

Actions that underscore our commitment to the future include:

- > Continuing to reduce emissions from AMD's operations to meet our 20% absolute reduction goal by 2020;
- > Pursuing "best-in-class" Foundry supplier environmental goals that significantly outperform industry averages;
- > Educating and inspiring employees to conserve resources through our "Go Green" environmental program; and
- > Advancing our award-winning 25x20 Energy Efficiency Initiative to deliver more compute performance with less power.



Learn more at [AMD.com/Planet](https://www.amd.com/Planet)



AMD'S CULTURE OF INCLUSION

At AMD, we harness our world-class technology to take on some of the world's toughest problems. This can't be done alone. It takes a diverse group of voices gathered together – every day of the week – to find solutions and drive our business growth. We thrive through respect for and inclusion of our employees' individual talents, personalities, experiences and passions. Differences challenge us in a healthy way – and improve our capability to bring the benefits of high-performance computing to consumers in a more meaningful manner.

From many voices, we create one vision of the future, together.

Inclusion starts with knowing one another – both professionally and personally. In 2018, AMD launched our newest resource group for employees caring for children, parents and pets; we achieved our highest participation among employee teams in our annual community Day of Service; and again, we earned a 100% score on the Human Rights Campaign's Corporate Equality Index.

We thank our workforce, partners and site communities for joining us as we continue to deliver technology designed to help solve some of the world's toughest challenges.

Susan Moore

Susan Moore | Corporate Vice President

ENABLING TODAY, INSPIRING TOMORROW

Art is inspired by life, much in the same way that AMD innovations are inspired by life – by people and what they can accomplish with the right technology.

AMD is a company that dares to imagine a better world and takes inspiration from our customers to deliver innovative solutions to the challenges and possibilities of our digital age. We don't create technology for technology's sake – we innovate for you and what you can achieve.

Learn more about how AMD is powering better lives at
[AMD.com/CorporateResponsibility](https://www.amd.com/CorporateResponsibility)

©2019 Advanced Micro Devices, Inc. All rights reserved. AMD, the AMD logo, Ryzen, Radeon, Vega, EPYC and combinations thereof are trademarks of Advanced Micro Devices, Inc. Other trade names are used for identification purposes only and may be the property or trademarks of their respective owners.
PID# 19248758-A